



Videoüberwachung Werkhof Henggart

Entsorgungstelle

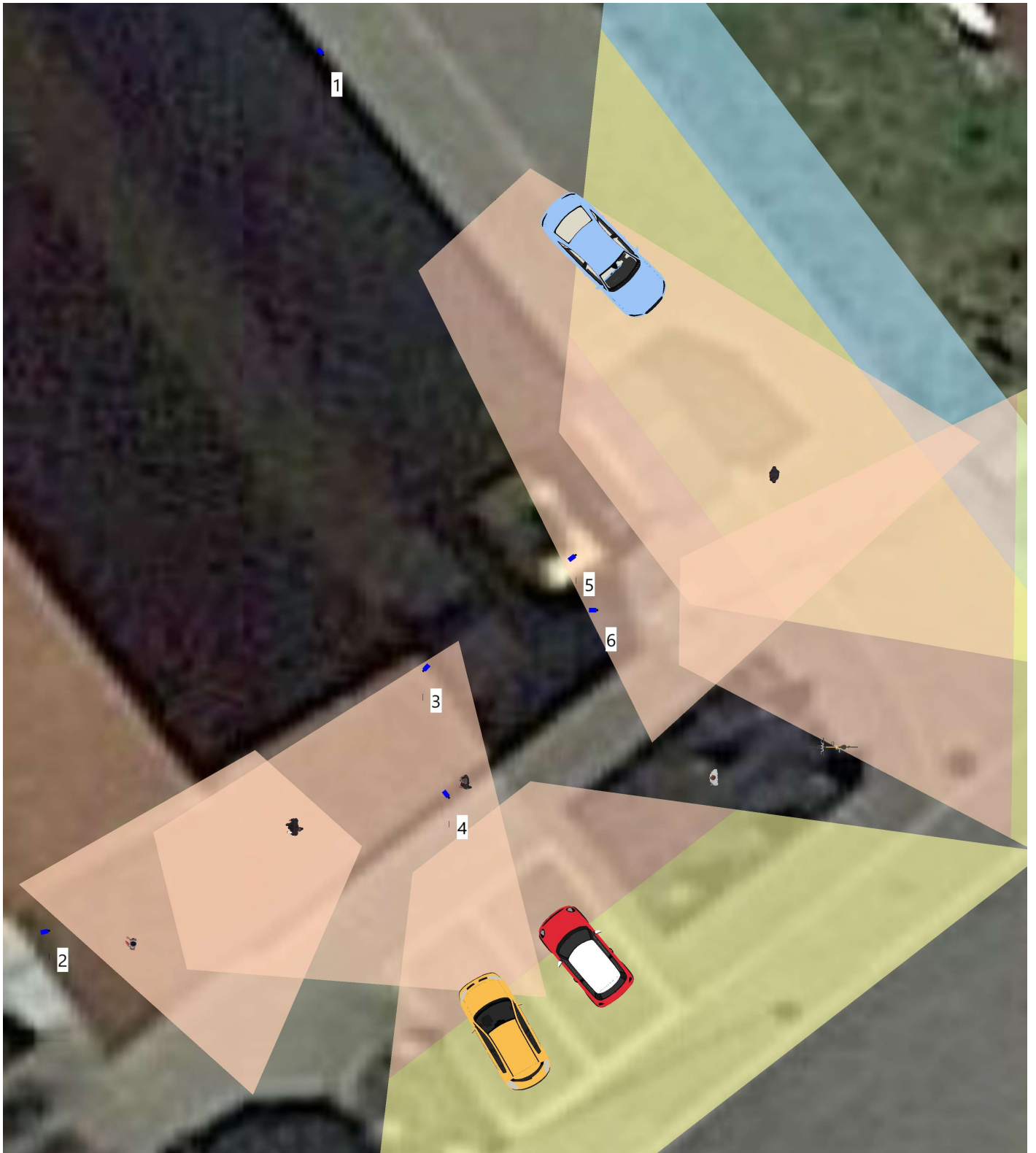
Digitalstore GmbH

Samuel Jucker

25.09.2024

Ausführung 09/2024

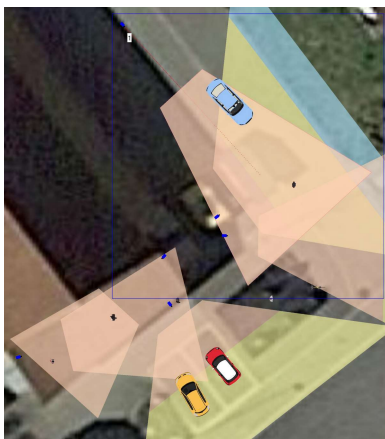
Lageplan. Videoüberwachung Werkhof Henggart Erdgeschoss





Kamera 1 Reolink RLC-811A

Mulden Feuerwehr



Kamera ID	Modell	Kamera Höhe, m	Auflösung	Brennweite (mm)	Sensorformat	Pixel/m am Objekt, px/m
1	Reolink RLC-811A	4.0	3840x2160	12.0	1/2.8"; 16:9	251



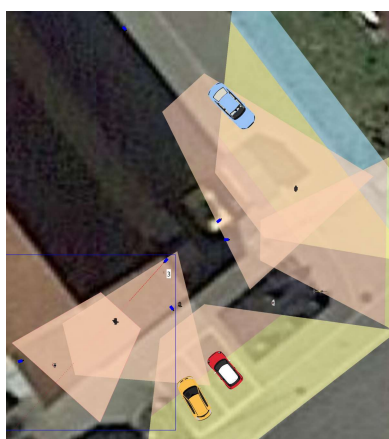
Kamera 2 Reolink RLC-811A Kadaver Eingang



Kamera ID	Modell	Kamera Höhe, m	Auflösung	Brennweite (mm)	Sensorformat	Pixel/m am Objekt, px/m
2	Reolink RLC-811A	5.5	3840x2160	9.3	1/2.8"; 16:9	320



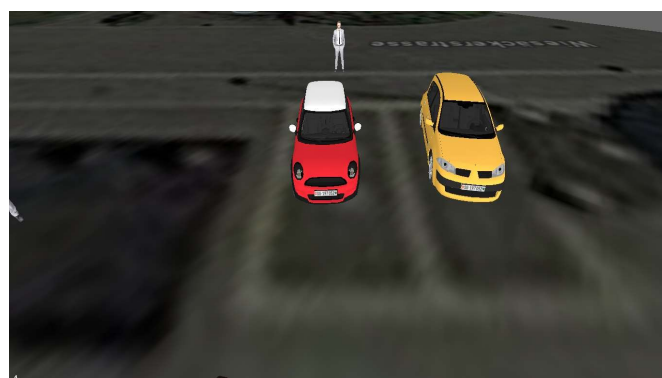
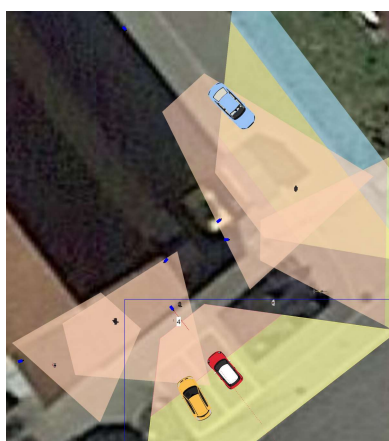
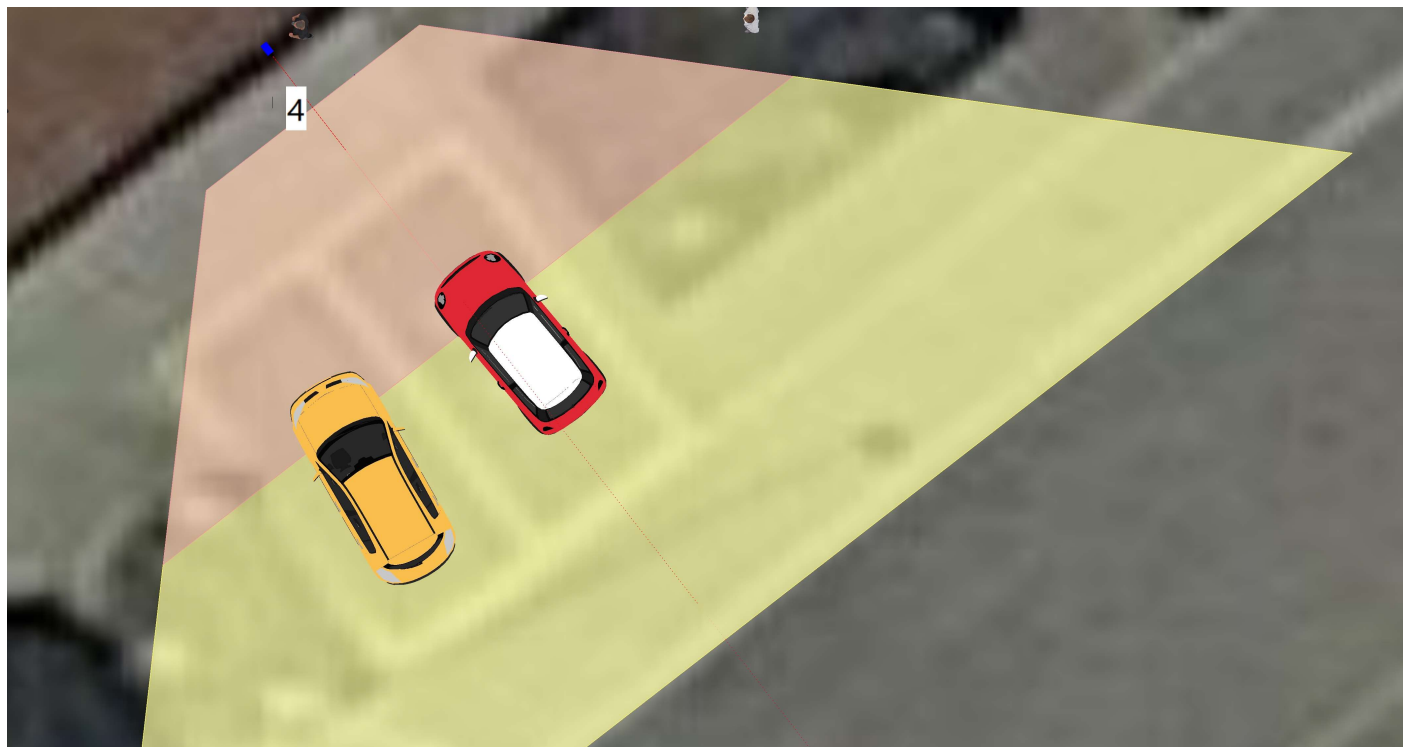
Kamera 3 Reolink RLC-811A Kadaver Oel



Kamera ID	Modell	Kamera Höhe, m	Auflösung	Brennweite (mm)	Sensorformat	Pixel/m am Objekt, px/m
3	Reolink RLC-811A	5.5	3840x2160	9.8	1/2.8"; 16:9	350



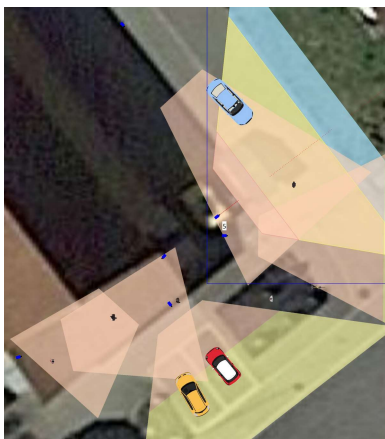
Kamera 4 Reolink RLC-811A Parkplatz



Kamera ID	Modell	Kamera Höhe, m	Auflösung	Brennweite (mm)	Sensorformat	Pixel/m am Objekt, px/m
4	Reolink RLC-811A	4.0	3840x2160	2.9	1/2.8"; 16:9	127



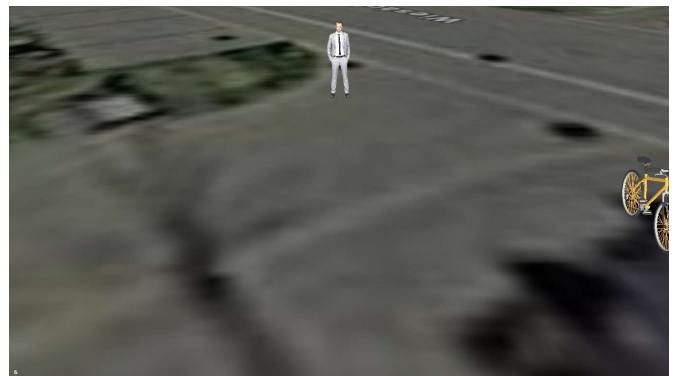
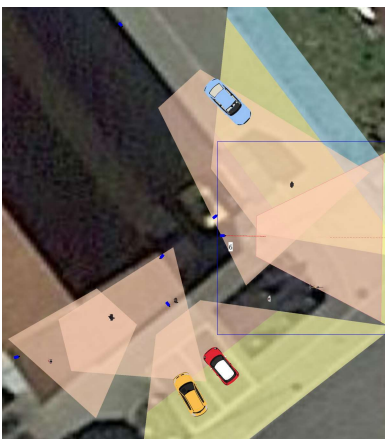
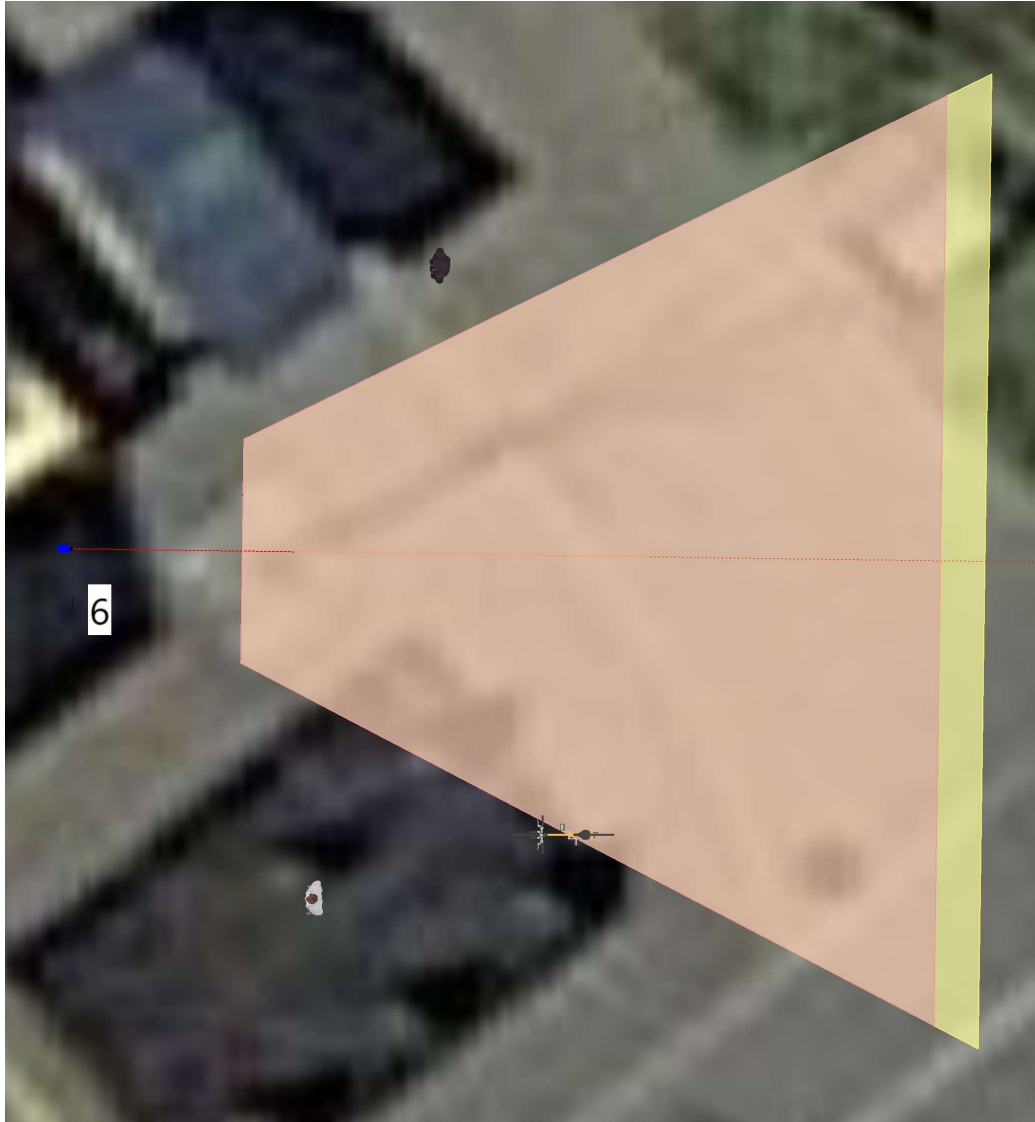
Kamera 5 Reolink RLC-811A Mulden Ost



Kamera ID	Modell	Kamera Höhe, m	Auflösung	Brennweite (mm)	Sensorformat	Pixel/m am Objekt, px/m
5	Reolink RLC-811A	4.0	3840x2160	2.7	1/2.8"; 16:9	101



Kamera 6 Reolink RLC-842A Glaseinwurf



Kamera ID	Modell	Kamera Höhe, m	Auflösung	Brennweite (mm)	Sensorformat	Pixel/m am Objekt, px/m
6	Reolink RLC-842A	4.0	3840x2160	6.2	1/2.8"; 16:9	239